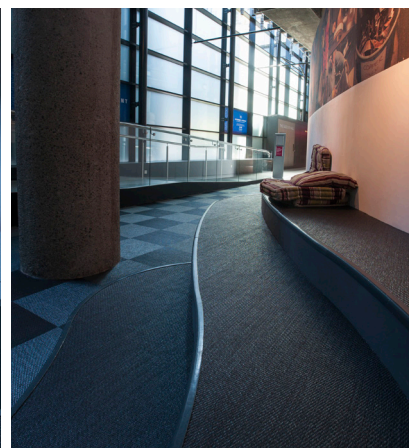
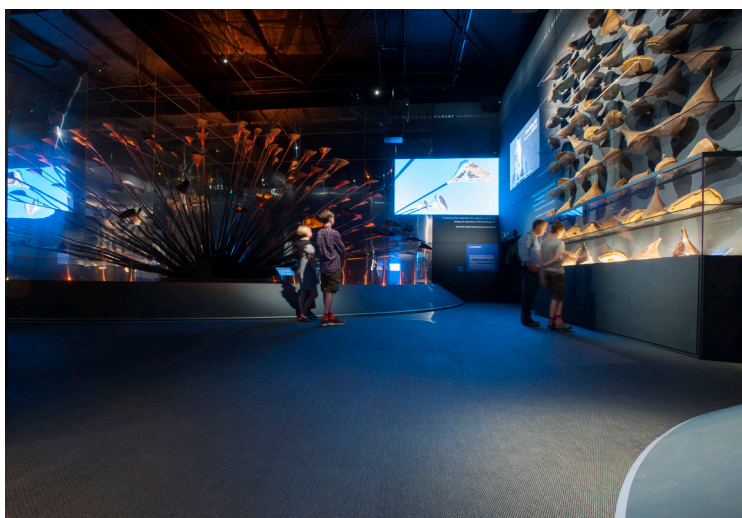




Project: Museum of London
City/country: London, UK
Architect: Drinkall Dean
Collection: Now Anthracite
Area: 100 m²
Year: 2014

Museum of London, UK



100 square meters of Now Anthracite tiles have been installed at the Museum of London. The flooring adds glimmering darkness to the black room where the Olympic Cauldron by Thomas Heatherwick Studio, designed for the Olympic ceremonies in London 2012, is displayed. The flooring by Bolon continues out in the entrance hall and covers built-in benches for the visitors.

BOLON